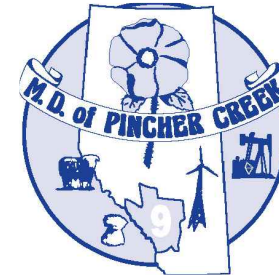
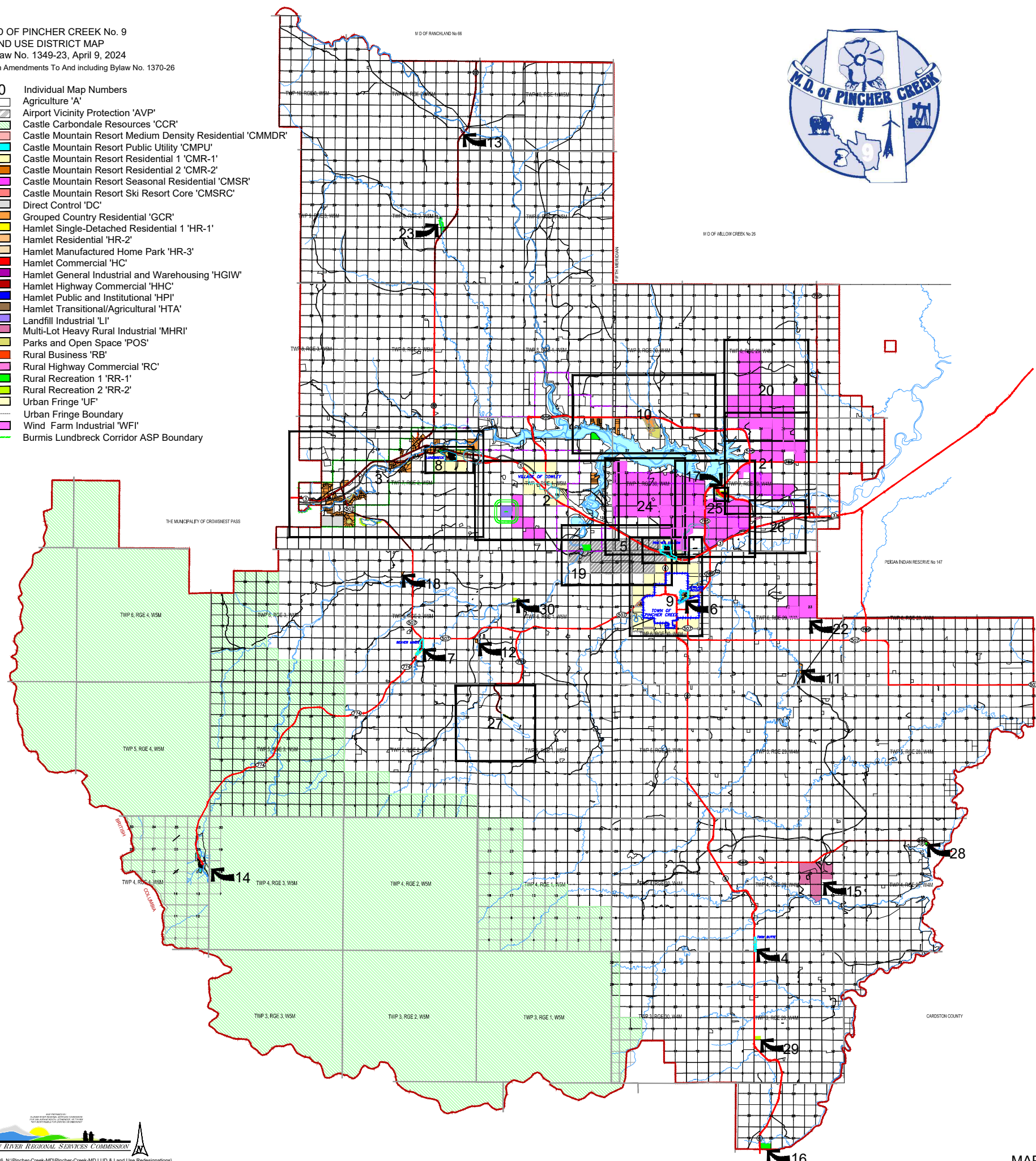
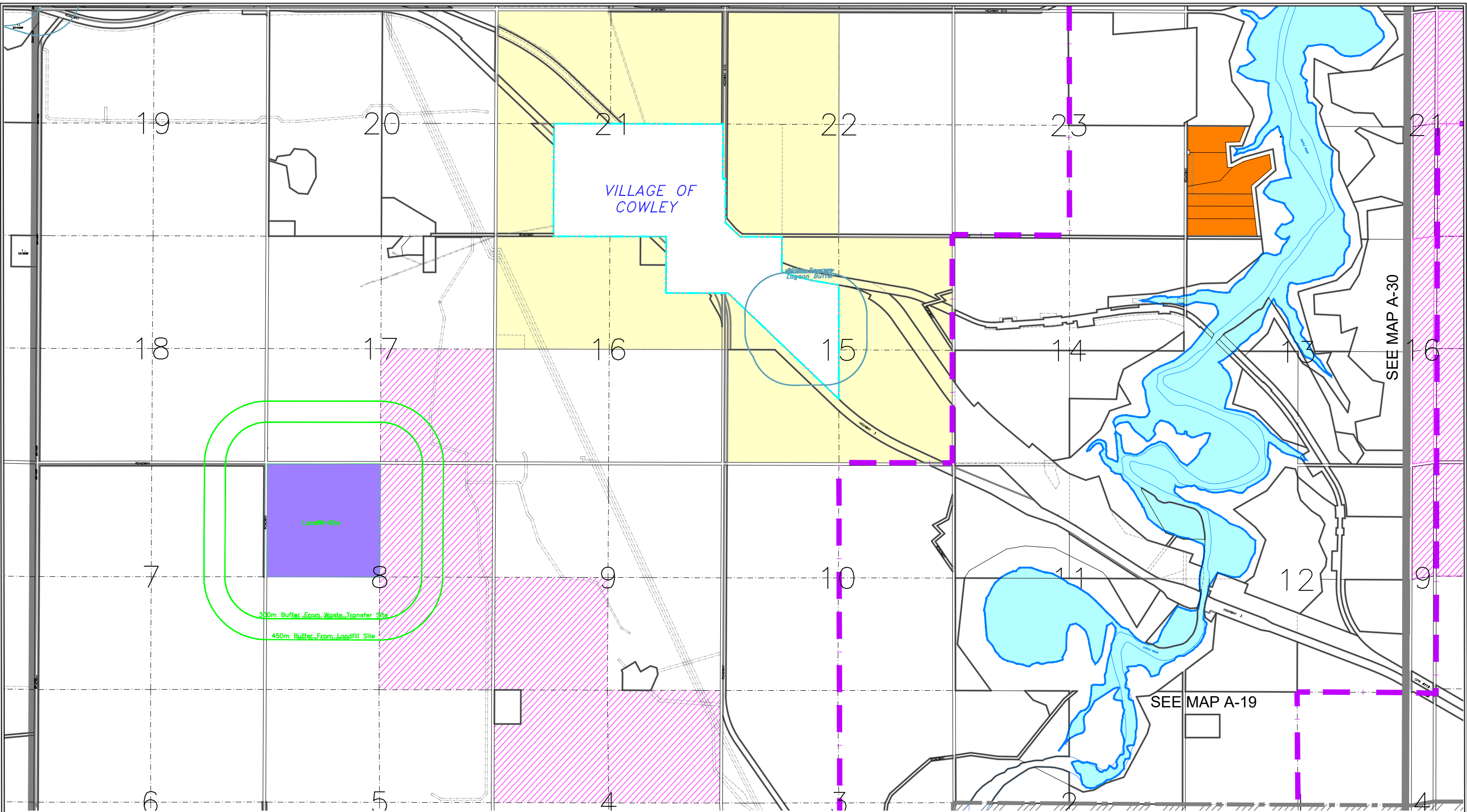


M.D. OF PINCHER CREEK No. 9
 LAND USE DISTRICT MAP
 Bylaw No. 1349-23, April 9, 2024
 With Amendments To And including Bylaw No. 1370-26



- 10** Individual Map Numbers
- Agriculture 'A'
 - Airport Vicinity Protection 'AVP'
 - Castle Carbondale Resources 'CCR'
 - Castle Mountain Resort Medium Density Residential 'CMMDR'
 - Castle Mountain Resort Public Utility 'CMPU'
 - Castle Mountain Resort Residential 1 'CMR-1'
 - Castle Mountain Resort Residential 2 'CMR-2'
 - Castle Mountain Resort Seasonal Residential 'CMSR'
 - Castle Mountain Resort Ski Resort Core 'CMSRC'
 - Direct Control 'DC'
 - Grouped Country Residential 'GCR'
 - Hamlet Single-Detached Residential 1 'HR-1'
 - Hamlet Residential 'HR-2'
 - Hamlet Manufactured Home Park 'HR-3'
 - Hamlet Commercial 'HC'
 - Hamlet General Industrial and Warehousing 'HGIW'
 - Hamlet Highway Commercial 'HHC'
 - Hamlet Public and Institutional 'HPI'
 - Hamlet Transitional/Agricultural 'HTA'
 - Landfill Industrial 'LI'
 - Multi-Lot Heavy Rural Industrial 'MHRI'
 - Parks and Open Space 'POS'
 - Rural Business 'RB'
 - Rural Highway Commercial 'RC'
 - Rural Recreation 1 'RR-1'
 - Rural Recreation 2 'RR-2'
 - Urban Fringe 'UF'
 - Urban Fringe Boundary
 - Wind Farm Industrial 'WFI'
 - Burmis Lundbreck Corridor ASP Boundary





SEE MAP A-30

SEE MAP A-19

MAP A-2



M.D OF PINCHER CREEK No. 9
 LAND USE DISTRICT MAP
 Bylaw No. 1349-23, April 9, 2024

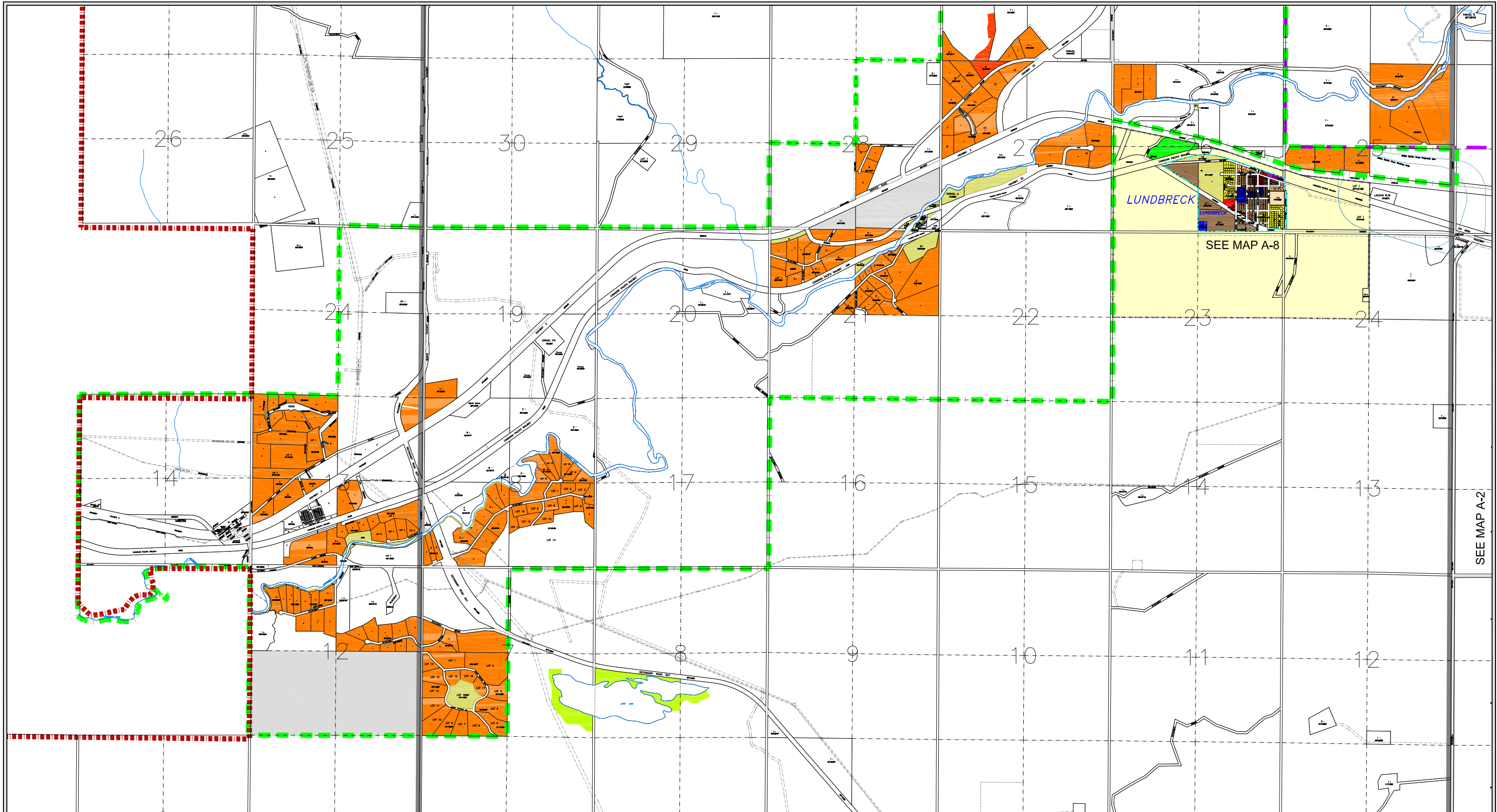
VILLAGE OF COWLEY FRINGE AREA & VICINITY

- Agriculture
- Urban Fringe
- Landfill Industrial
- Village Boundary

- 'A'
- 'UF'
- 'LI'

- Grouped Country Residential
- Wind Farm Industrial
- Oldman Dam ASP Boundary

- 'GCR'
- 'WFI'



SEE MAP A-2



M.D OF PINCHER CREEK No. 9
 LAND USE DISTRICT MAP
 Bylaw No. 1349-23, April 9, 2024
 With Amendments To And including Bylaw No. 1370-26

BURMIS LUNDBRECK CORRIDOR

--- Burmis Lundbreck Corridor ASP Boundary
 - - - Hamlet Boundary

- Agricultural
- Direct Control
- Parks And Open Space
- Rural Recreation 1
- Rural Recreation 2
- Grouped Country Residential
- Rural Business

- 'A'
- 'DC'
- 'POS'
- 'RR-1'
- 'RR-2'
- 'GCR'
- 'RB'

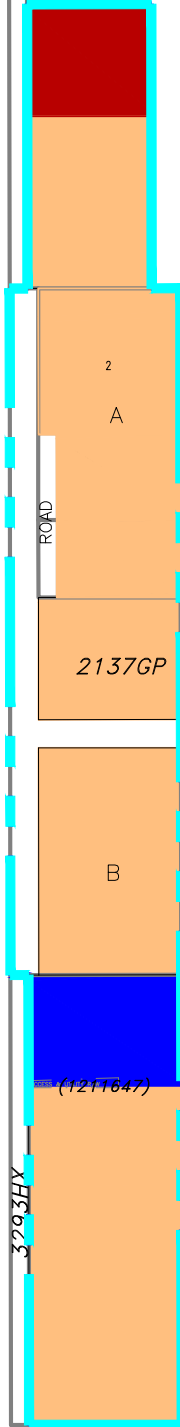
MAP A-3



April 08, 2026 N:\Pincher-Creek-MD\Pincher-Creek-MD LUD & Land Use Redesignations
 MD of Pincher Creek LUB 1349-23 - April 9, 2024 (Map Amended to 1370-26).dwg

SE5 4-29-4

3293HX



SW4 4-29-4

3293HY



M.D OF PINCHER CREEK No. 9
 LAND USE DISTRICT MAP
 Bylaw No. 1349-23, April 9, 2024

HAMLET OF TWIN BUTTE

- Agriculture 'A'
- Hamlet Highway Commercial 'HHC'
- Hamlet Residential 2 'HR-2'
- Hamlet Public And Institutional 'HPI'
- Hamlet Boundary

MAP A-4





M.D OF PINCHER CREEK No. 9
 LAND USE DISTRICT MAP
 Bylaw No. 1349-23, April 9, 2024

HAMLET OF PINCHER STATION

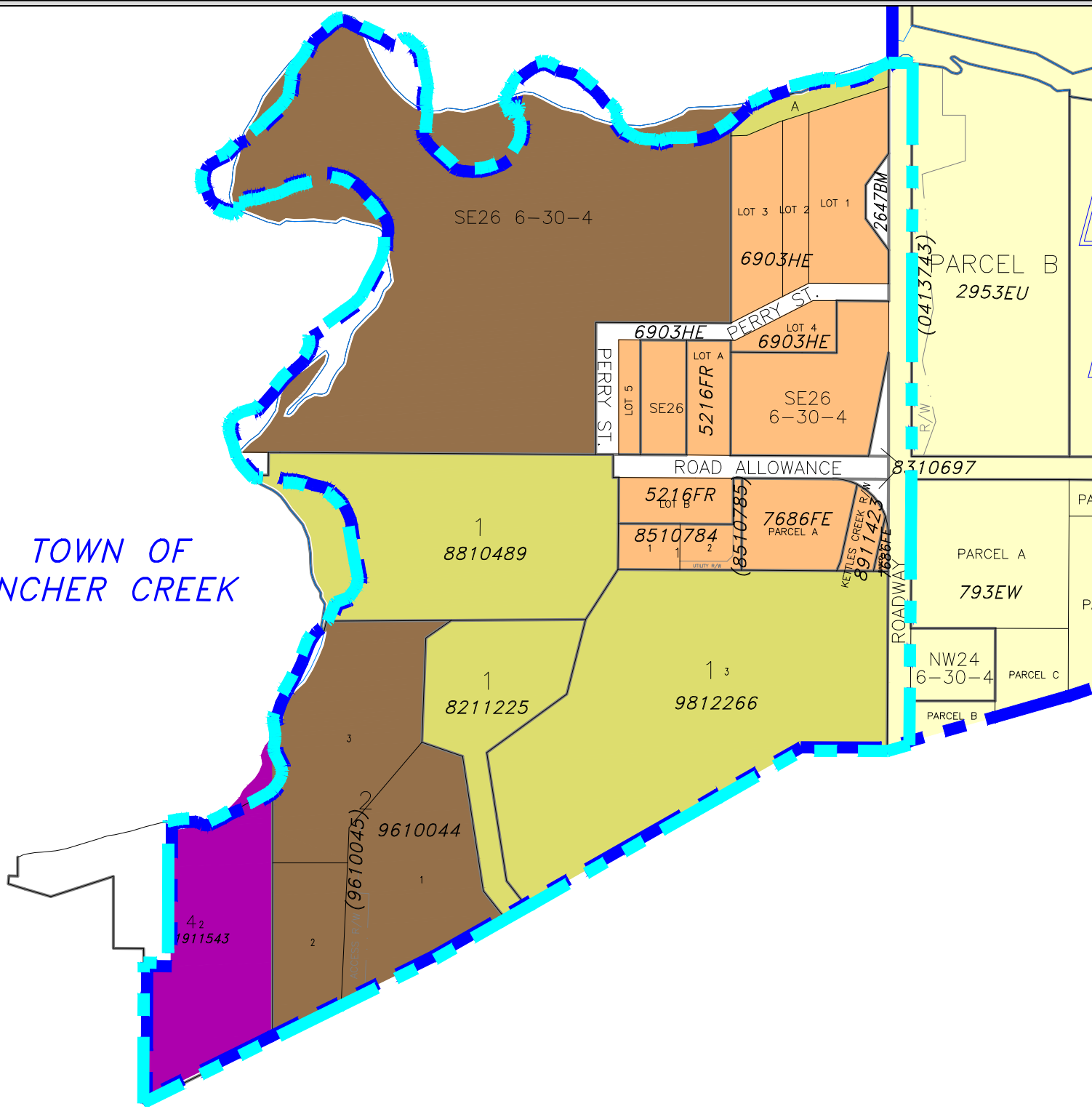
- Agriculture
 - Urban Fringe
 - Hamlet Commercial
 - Hamlet Highway Commercial
 - Hamlet General Industrial And Warehousing
 - Hamlet Residential 2
 - Airport Vicinity Protection
 - Hamlet Boundary
- 'A'
 - 'UF'
 - 'HC'
 - 'HHC'
 - 'HGIW'
 - 'HR-2'
 - 'AVP'

MAP A-5



May 06, 2025 N:\Pincher-Creek-MD\Pincher-Creek-MD LUD & Land Use Redesignations\MD of Pincher Creek LUB 1349-23 - April 9, 2024 (Map Amended to 1352-24).dwg

TOWN OF PINCHER CREEK



M.D OF PINCHER CREEK No. 9
 LAND USE DISTRICT MAP
 Bylaw No. 1349-23, April 9, 2024

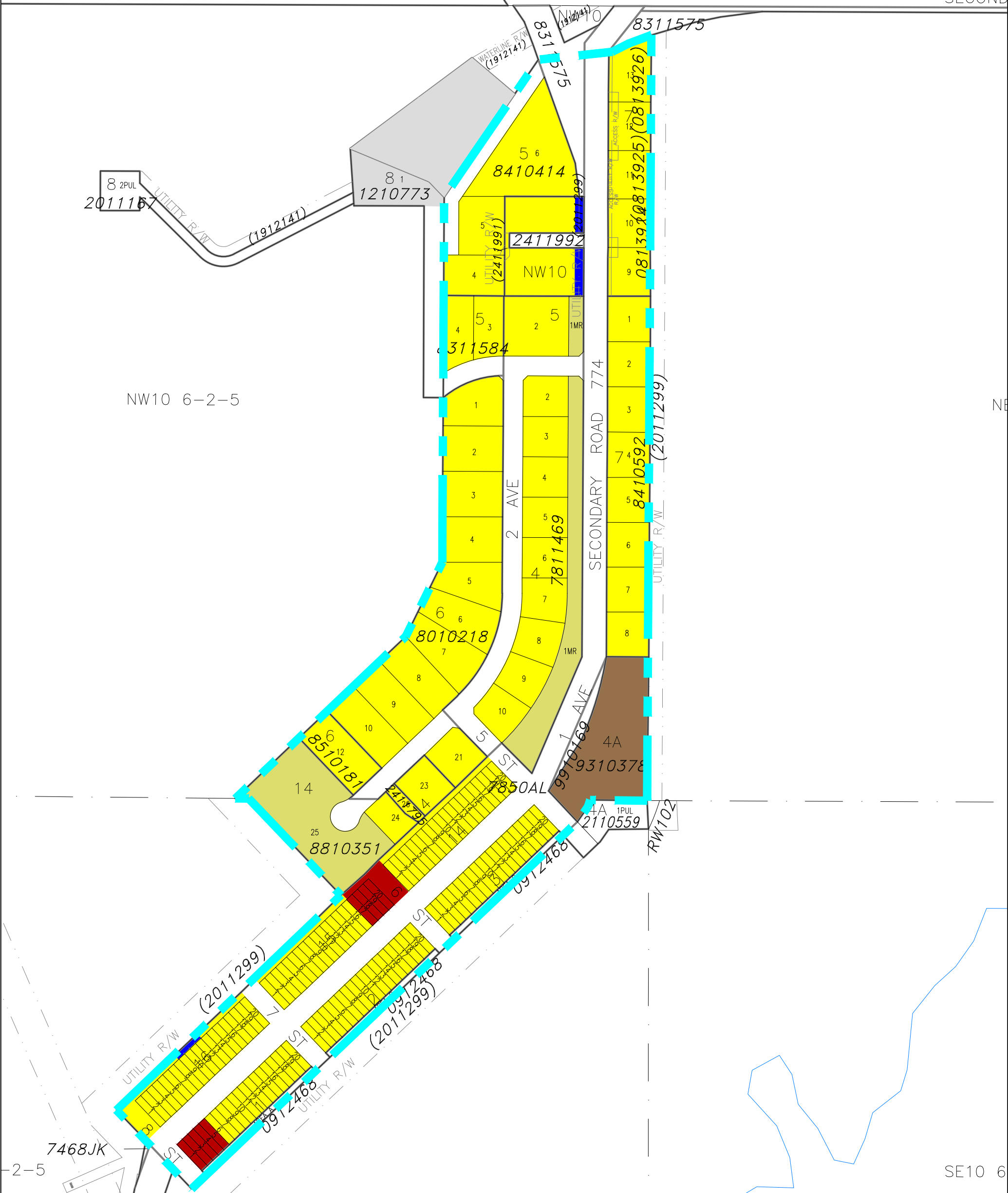
HAMLET OF LOWLAND HEIGHTS

- Urban Fringe
- Parks And Open Space
- Hamlet General Industrial And Warehousing
- Hamlet Residential 2
- Hamlet Transitional / Agricultural
- Hamlet Boundary
- Town Of Pincher Creek Boundary

- 'UF'
- 'POS'
- 'HGIW'
- 'HR-2'
- 'HTA'

MAP A-6



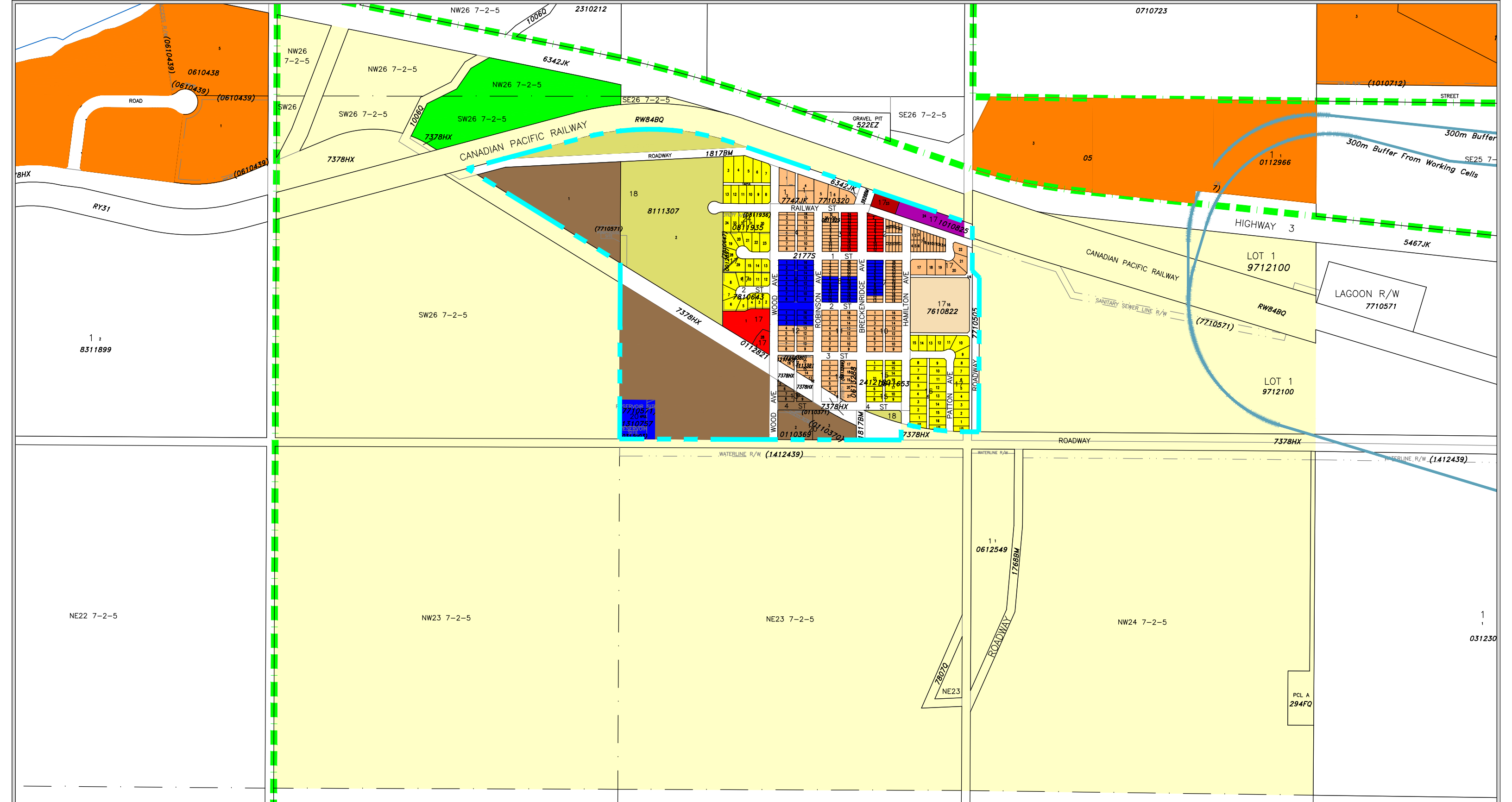


**M.D OF PINCHER CREEK No. 9
LAND USE DISTRICT MAP**
Bylaw No. 1349-23, April 9, 2024
With Amendments To And including Bylaw No: 1352-24

HAMLET OF BEAVER MINES

- Agriculture
 - Direct Control
 - Parks And Open Space
 - Hamlet Highway Commercial
 - Hamlet Single-Detached Residential 1
 - Hamlet Public And Institutional
 - Hamlet Transitional / Agricultural
 - Hamlet Boundary
- 'A'
 - 'DC'
 - 'POS'
 - 'HHC'
 - 'HR-1'
 - 'HPI'
 - 'HTA'

MAP A-7

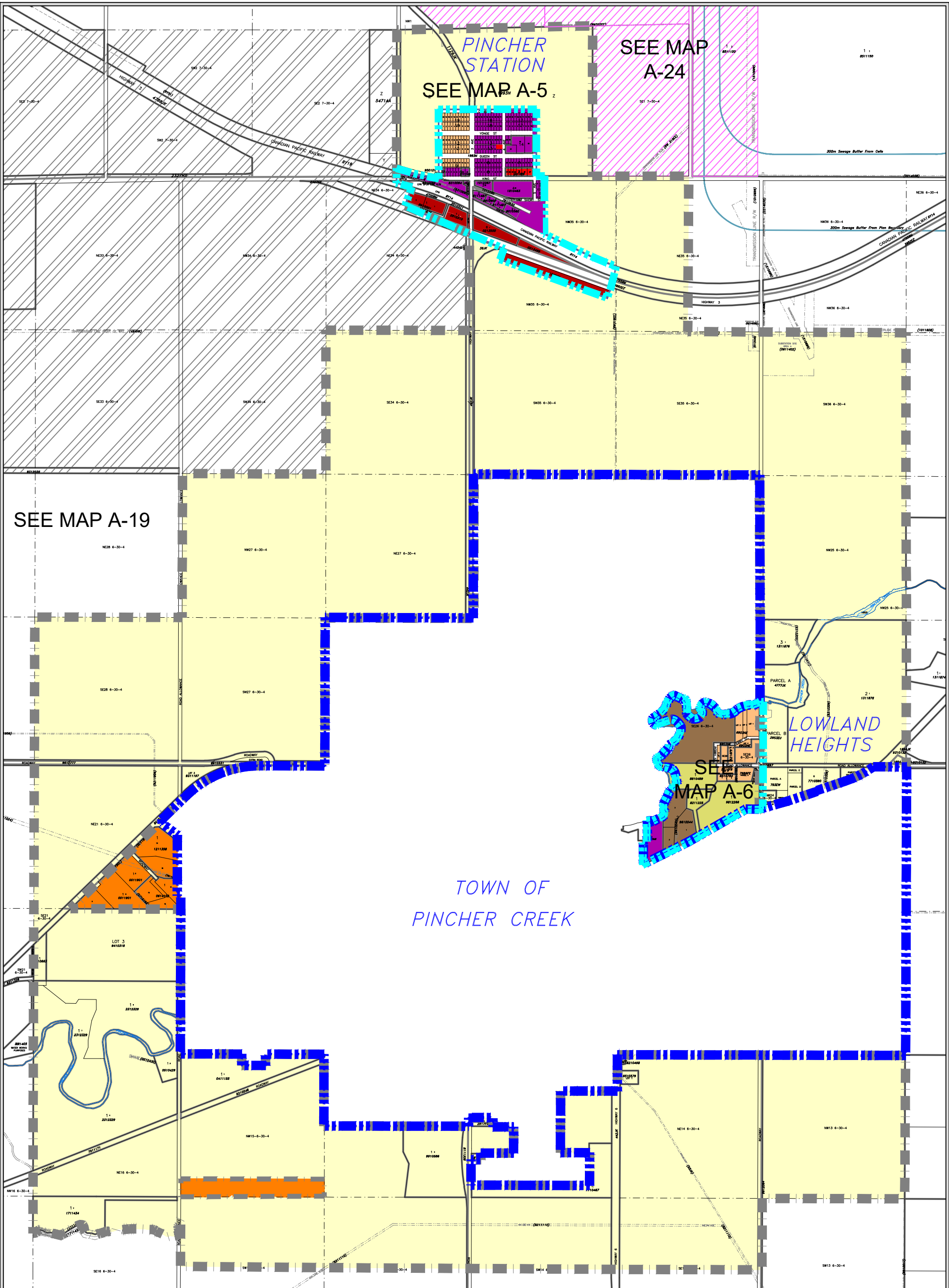


M.D OF PINCHER CREEK No. 9
 LAND USE DISTRICT MAP
 Bylaw No. 1349-23, April 9, 2024

HAMLET OF LUNDBRECK


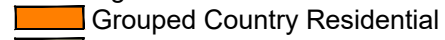
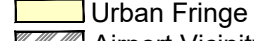
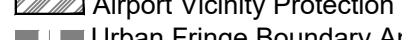


- - - - - Burmis Lundbreck Corridor ASP Boundary
- - - - - Hamlet Boundary
- Agriculture 'A'
- Urban Fringe 'UF'
- Parks And Open Space 'POS'
- Hamlet Commercial 'HC'
- Hamlet General Industrial And Warehousing 'HGIW'
- Hamlet Residential 2 'HR-2'
- Hamlet Manufactured Home Park 3 'HR-3'
- Hamlet Public And Institutional 'HPI'
- Hamlet Transitional / Agricultural 'HTA'
- Rural Recreational 1 'RR1'
- Grouped Country Residential 'GCR'
- Hamlet Highway Commercial 'HHC'

MAP A-8



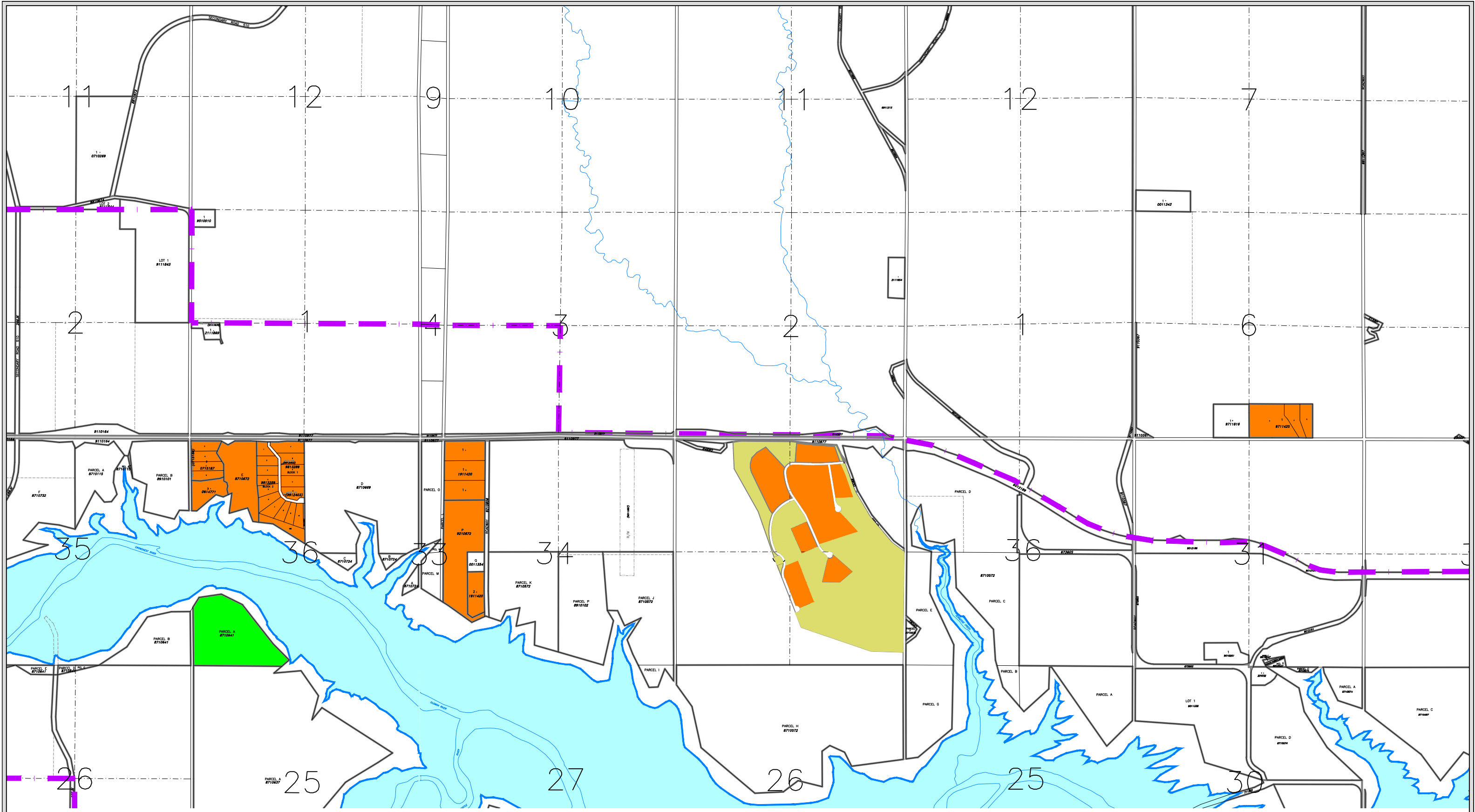
M.D OF PINCHER CREEK No. 9
 LAND USE DISTRICT MAP
 Bylaw No. 1349-23, April 9, 2024

TOWN OF PINCHER CREEK - URBAN FRINGE

-  Agriculture
-  Grouped Country Residential
-  Urban Fringe
-  Airport Vicinity Protection
-  Urban Fringe Boundary And Intermunicipal Development Plan Boundary
-  Hamlet Boundary
-  Town Of Pincher Creek Boundary

- 'A'
- 'GCR'
- 'UF'
- 'AVP'

MAP A-9



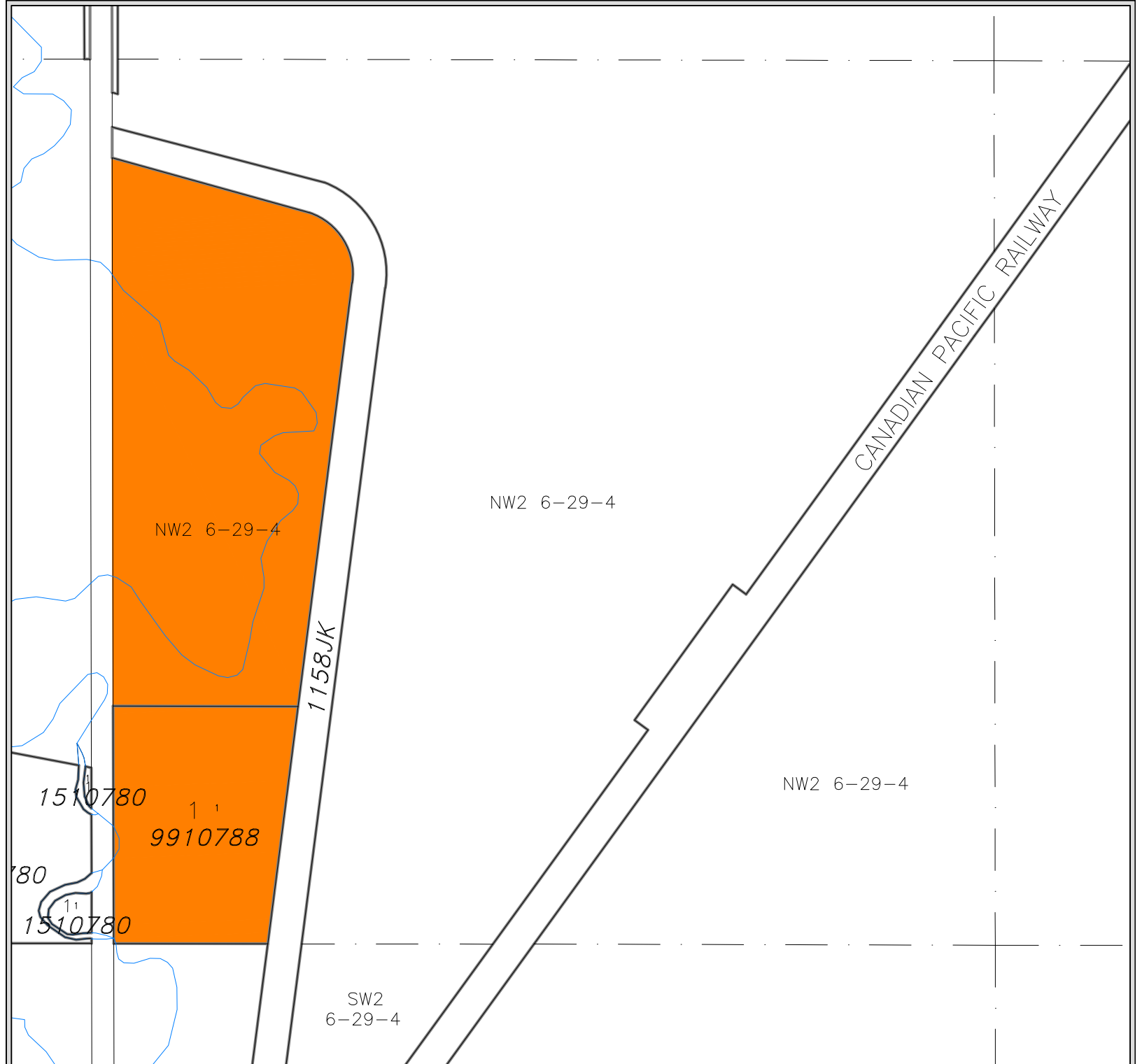
M.D OF PINCHER CREEK No. 9
 LAND USE DISTRICT MAP
 Bylaw No. 1349-23, April 9, 2024

OLDMAN RIVER RESERVOIR NORTHSIDE

- Agriculture
- Grouped Country Residential
- Parks And Open Space
- Rural Recreation 1
- Oldman Dam ASP Boundary
- 'A'
- 'GCR'
- 'POS'
- 'RR-1'

MAP A-10





**M.D OF PINCHER CREEK No. 9
LAND USE DISTRICT MAP
Bylaw No. 1349-23, April 9, 2024**

NW 1/4 SEC 2, TWP 6, RGE 29, W 4 M

- Agriculture
- Grouped Country Residential
- 'A'
- 'GCR'

MAP A-11

PIPELINE R/W

SE13 6-2-5

SE13 6-2-5

9812422

11
1411333

3190JK

ROADWAY

NW7
6-1-5

11
8110749

3039BM

2121N

NW7

MILL CREEK

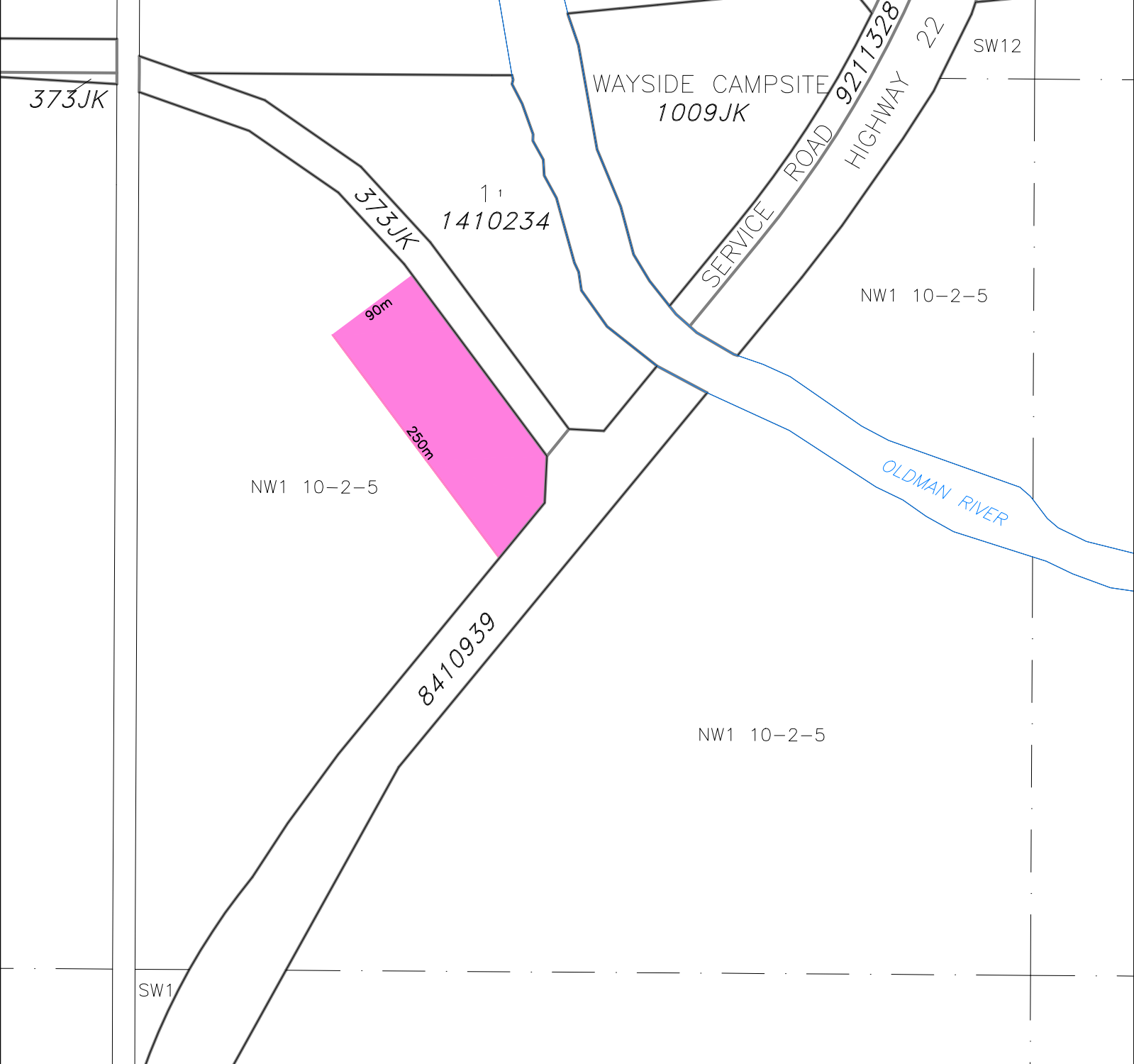


M.D. OF PINCHER CREEK No. 9
LAND USE DISTRICT MAP
Bylaw No. 1349-23, April 9, 2024

NE 1/4 SEC 12 & SE 1/4 SEC 13, TWP 6, RGE 2, W 5 M

-  Agriculture
-  Direct Control
-  Grouped Country Residential
- 'A'
- 'DC'
- 'GCR'

MAP A-12

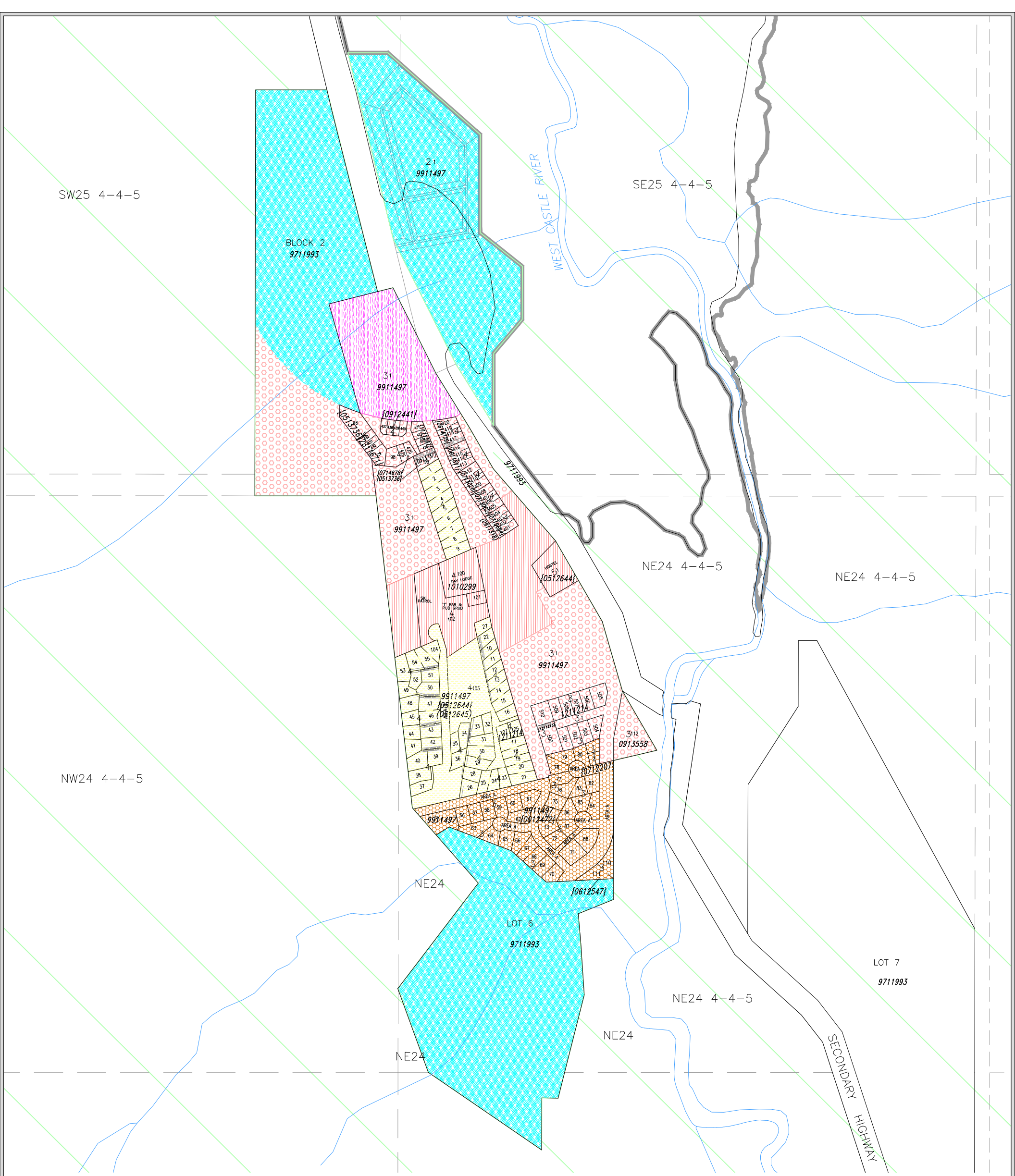


**M.D OF PINCHER CREEK No. 9
LAND USE DISTRICT MAP
Bylaw No. 1349-23, April 9, 2024**

NW 1/4 SEC 1, TWP 10, RGE 2, W 5 M

- Agriculture 'A'
- Rural Highway Commercial 'RC'

MAP A-13

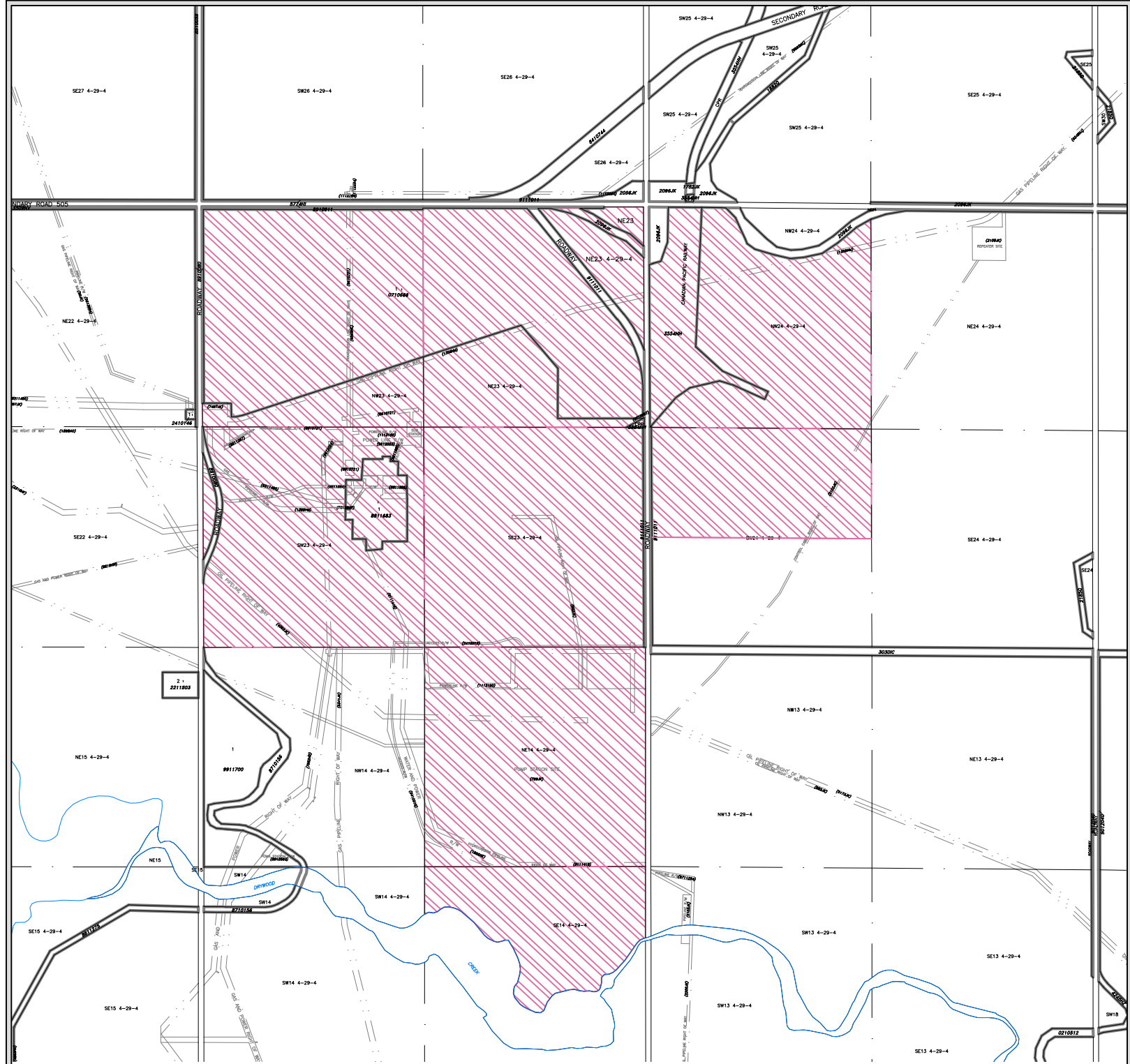


**M.D OF PINCHER CREEK No. 9
LAND USE DISTRICT MAP
Bylaw No. 1349-23, April 9, 2024**

CASTLE MOUNTAIN RESORT

- West Castle Wetlands-Non Surveyed Location Approximate
 - Castle Carbondale Resource
 - Castle Mountain Resort Medium Density Residential
 - Castle Mountain Resort Public Utility
 - Castle Mountain Resort Residential 1
 - Castle Mountain Resort Residential 2
 - Castle Mountain Resort Seasonal Residential
 - Castle Mountain Resort Ski Resort Core
- 'CCR'
 - 'CMMDR'
 - 'CMPU'
 - 'CMR-1'
 - 'CMR-2'
 - 'CMSR'
 - 'CMSRC'

MAP A-14

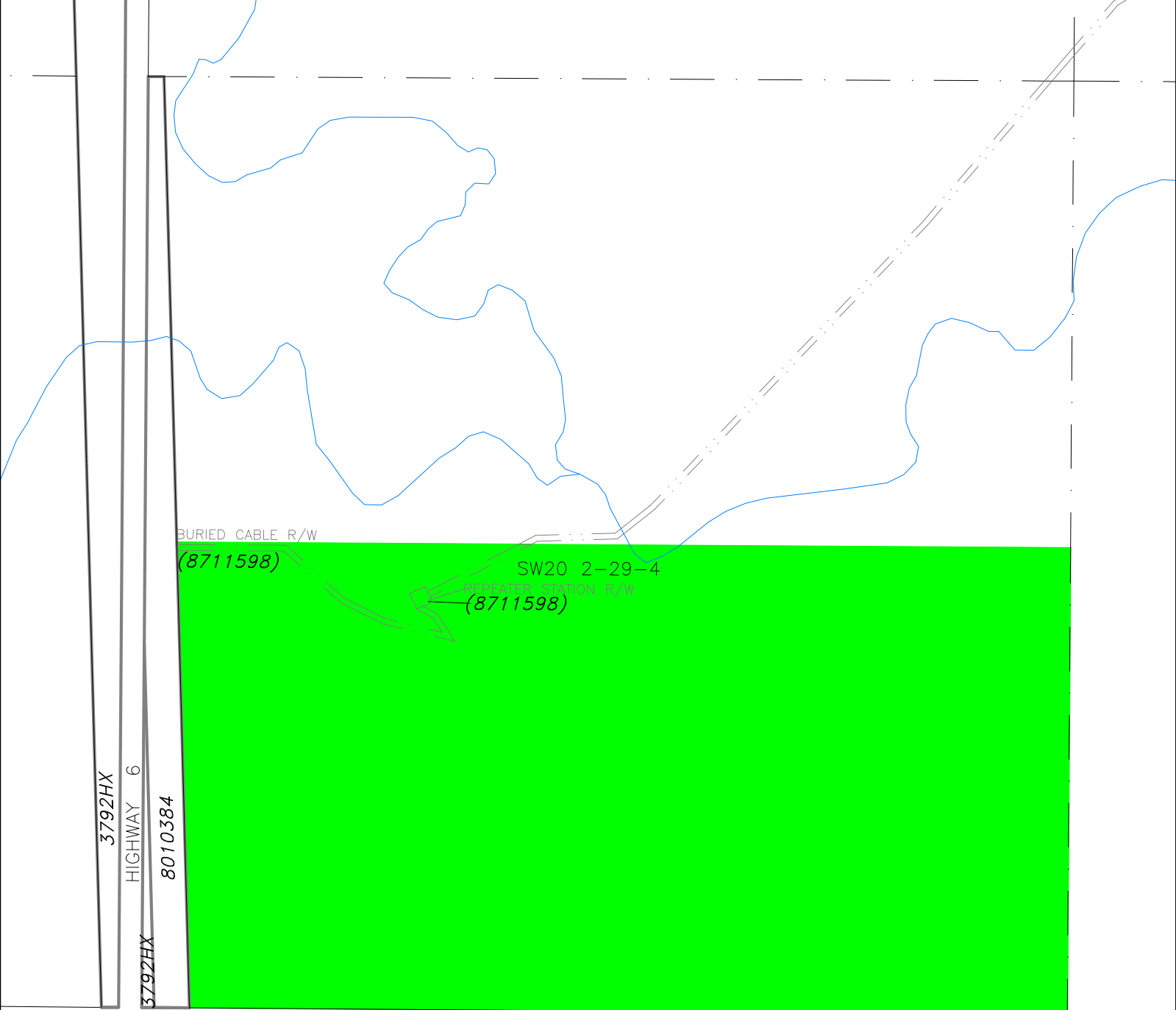


**M.D OF PINCHER CREEK No. 9
LAND USE DISTRICT MAP
Bylaw No. 1349-23, April 9, 2024**

**PORTION OF SEC 14, ALL SEC 23 & PORTION OF SEC 24
IN TWP 4, RGE 29, W 4 M**

MAP A-15

-  Agriculture 'A'
-  Multi-Lot Heavy Rural Industrial 'MHRI'



M.D. OF PINCHER CREEK No. 9
 LAND USE DISTRICT MAP
 Bylaw No. 1349-23, April 9, 2024

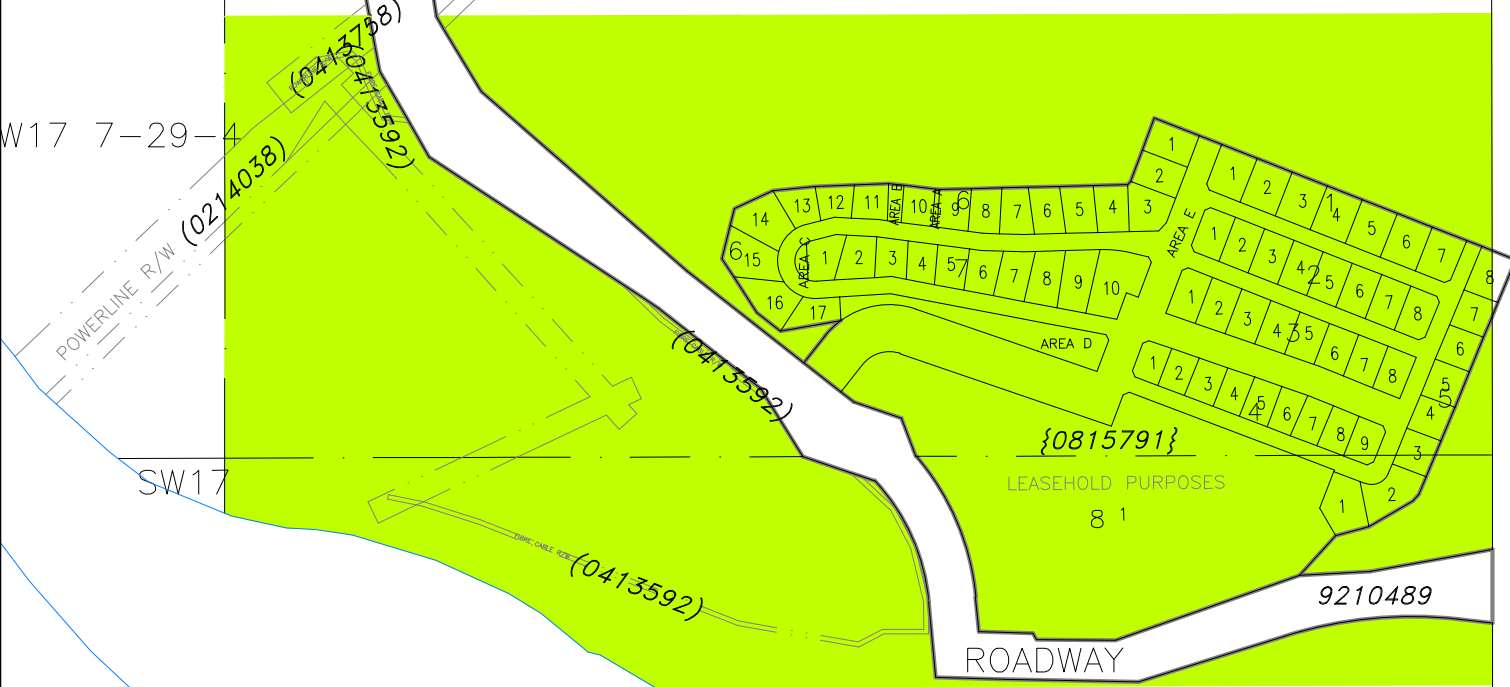
PORTION OF SW 20, TWP 2, RGE 29, W 4 M
 WATERTON HOMESTEAD CAMPGROUND

- Agriculture 'A'
- Rural Recreation 1 'RR-1'

MAP A-16

NE17 7-29-4

W17 7-29-4



SE17 7-29-4



**M.D. OF PINCHER CREEK No. 9
LAND USE DISTRICT MAP
Bylaw No. 1349-23, April 9, 2024**

PORTION OF NE & SE SEC 17, TWP 7, RGE 29, W 4 M
CASTLE VIEW RIDGE

MAP A-17

- Agriculture 'A'
- Rural Recreation 2 'RR-2'

NE28 6-2-5

ROADWAY 8910946

NE28 6-2-5

8910946

NW28

NE28 6-2-5

SE28 6-2-5

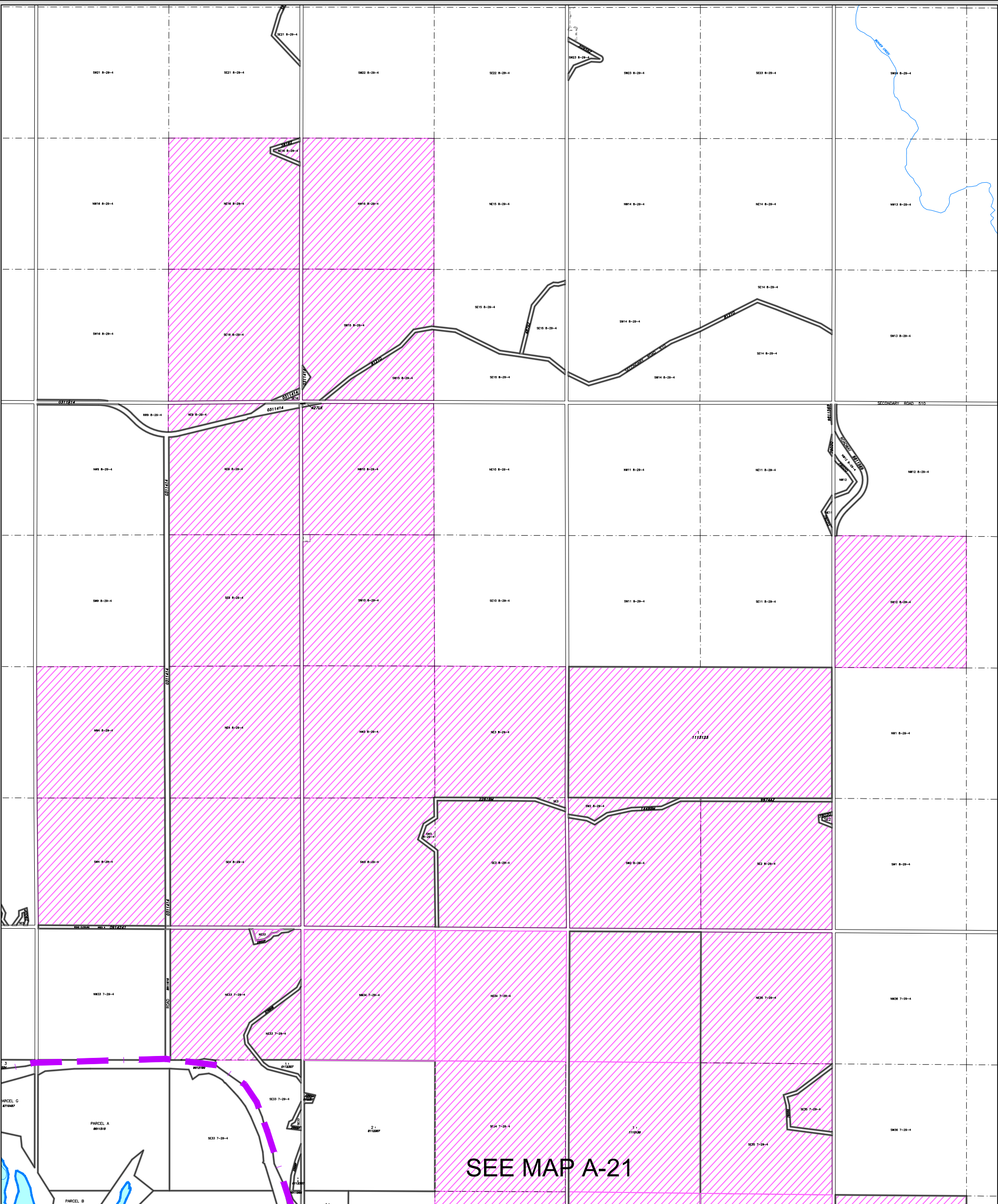


M.D. OF PINCHER CREEK No. 9
LAND USE DISTRICT MAP
Bylaw No. 1349-23, April 9, 2024

NE 1/4 SEC 28, TWP 6, RGE 2, W 5 M

-  Agriculture 'A'
-  Grouped Country Residential 'GCR'

MAP A-18



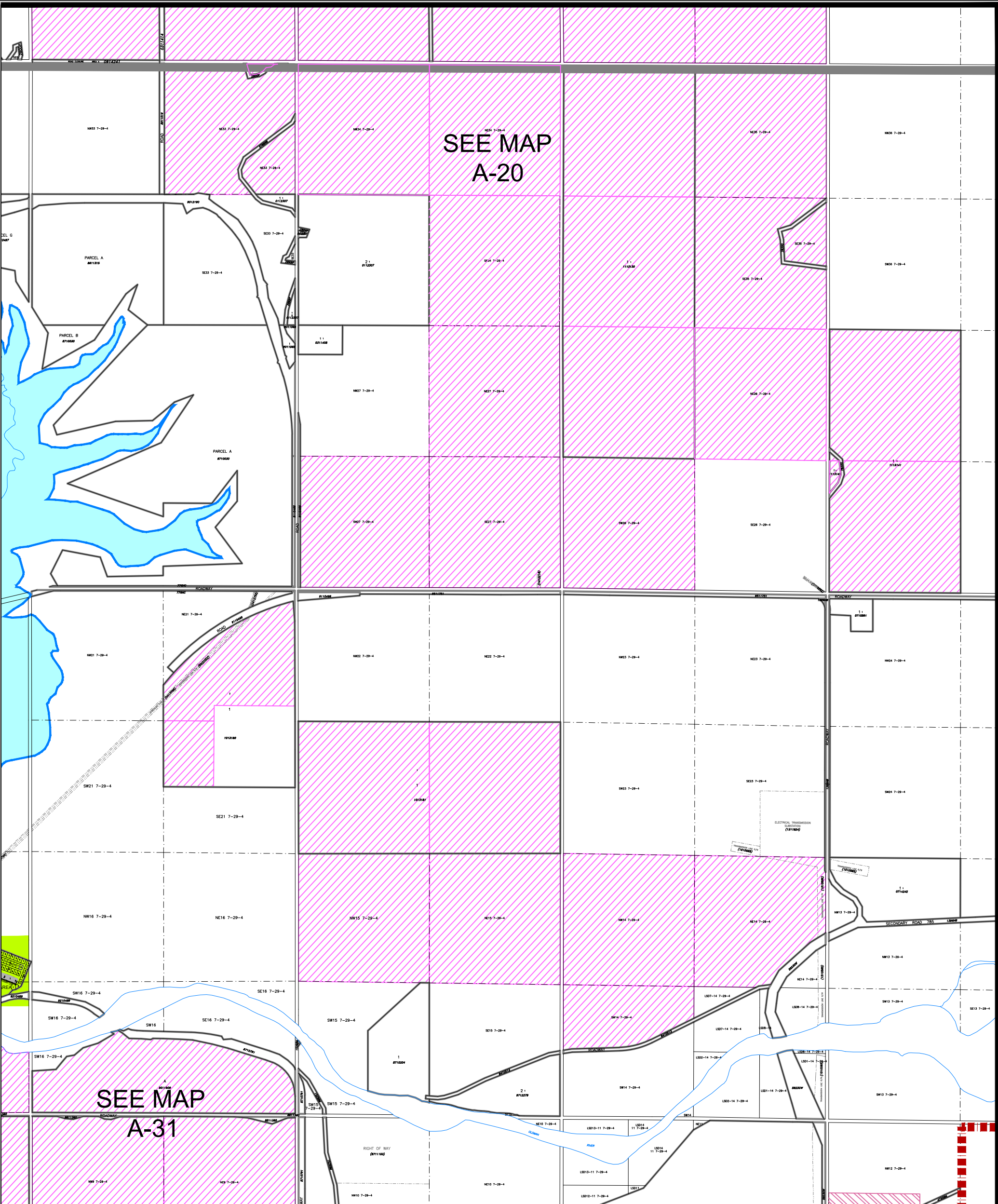
**M.D OF PINCHER CREEK No. 9
LAND USE DISTRICT MAP
Bylaw No. 1349-23, April 9, 2024**

**NE 33, N 1/2 34, N 1/2 35, TWP 7, RGE 29, W 4 M &
ALL 2, ALL 3, ALL 4, E 1/2 9, W 1/2 10, SW 12, W 1/2 15, E 1/2 16,
TWP 8, RGE 29, W 4 M**

MAP A-20

- Agriculture 'A'
- Wind Farm Industrial 'WFI'
- Oldman Dam ASP Boundary



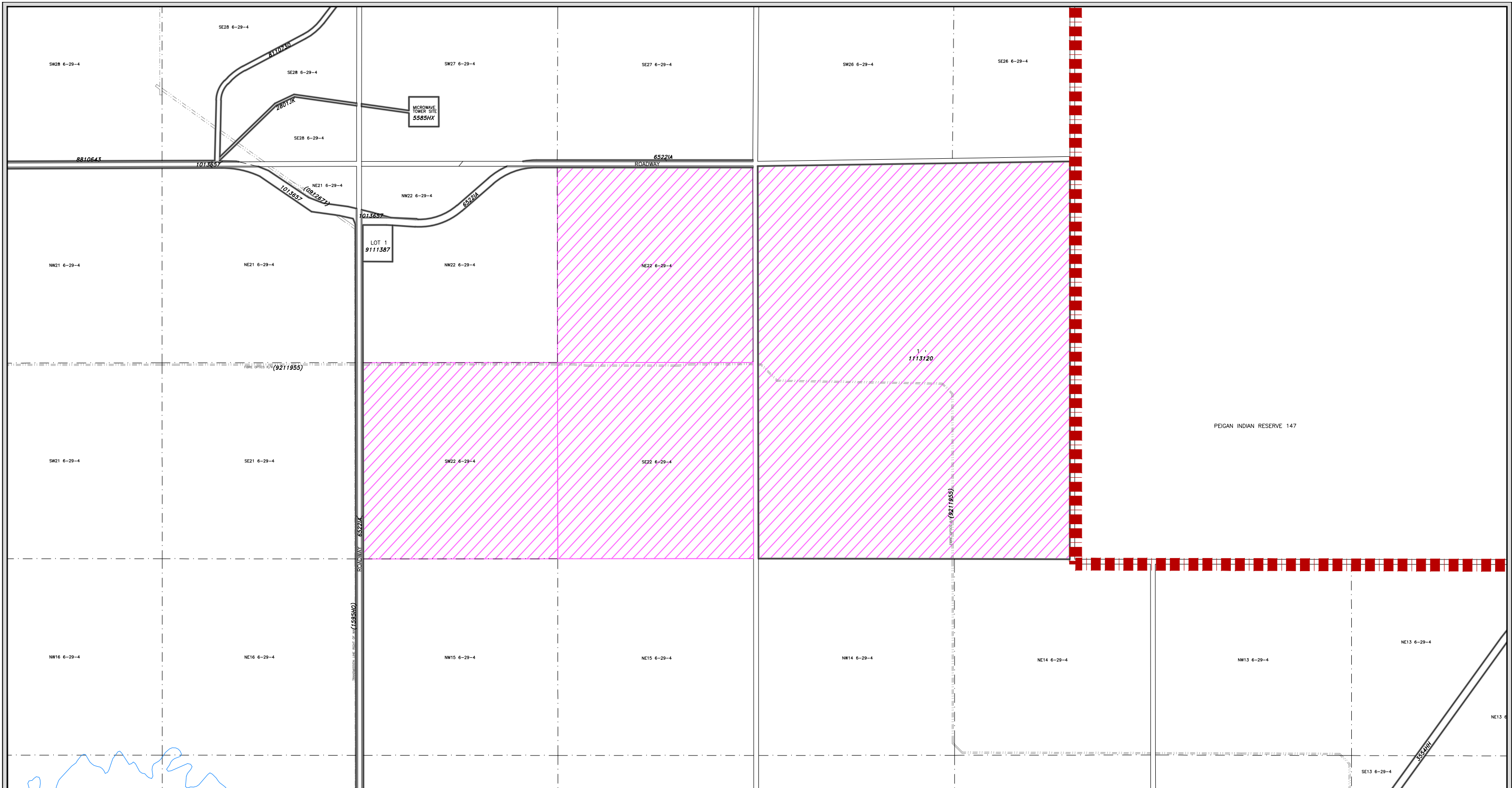


M.D OF PINCHER CREEK No. 9
 LAND USE DISTRICT MAP
 Bylaw No. 1349-23, April 9, 2024

N 1/2 14, SW 14, N 1/2 15, E 1/2 21, S 1/2 22, W 1/2 25, NE 26, W 1/2 26,
 E 1/2 27, SW 27, SE 34, S 1/2 35, TWP 7, RGE 29, W 4 M

MAP A-21

- Agriculture
- Wind Farm Industrial
- 'A'
- 'WFI'



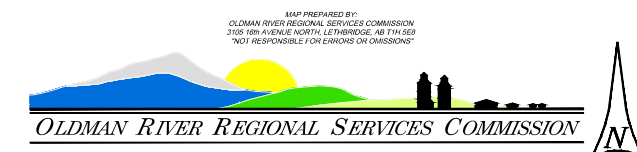
M.D OF PINCHER CREEK No. 9
 LAND USE DISTRICT MAP
 Bylaw No. 1349-23, April 9, 2024

PORTION OF SEC 22 & SEC 23, TWP 6, RGE 29, W 4 M

 Agriculture
 Wind Farm Industrial

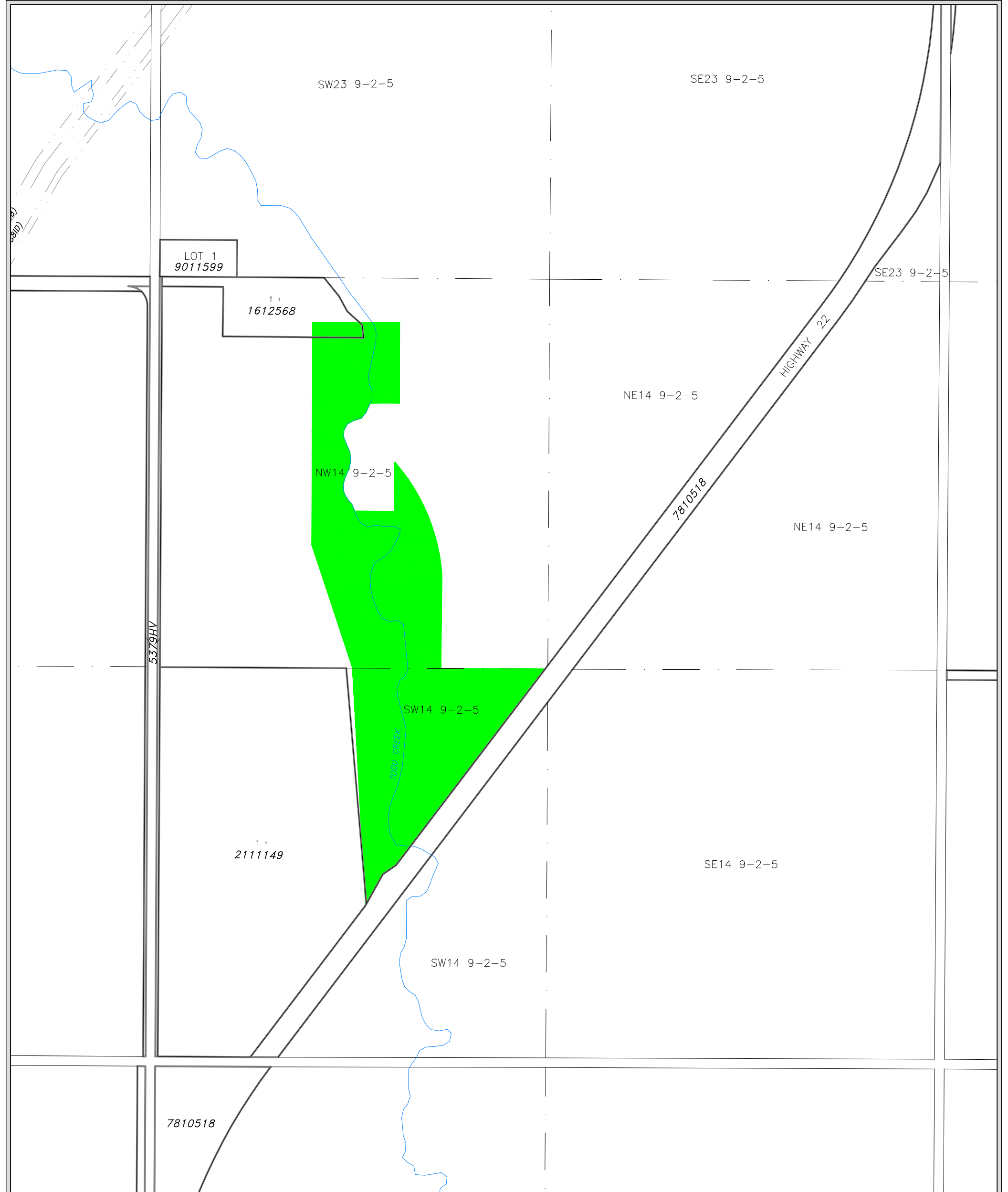
'A'
'WFI'

MAP A-22



May 06, 2025 N:\Pincher-Creek-MD\Pincher-Creek-MD LUD & Land Use Redesignations\
 MD of Pincher Creek LUB 1349-23 - April 9, 2024 (Map Amended to 1352-24).dwg

MAP PREPARED BY:
 OLDMAN RIVER REGIONAL SERVICES COMMISSION
 3705 78th AVENUE NORTH, LETHBRIDGE, AB T1H 3E8
 "NOT RESPONSIBLE FOR ERRORS OR OMISSIONS"

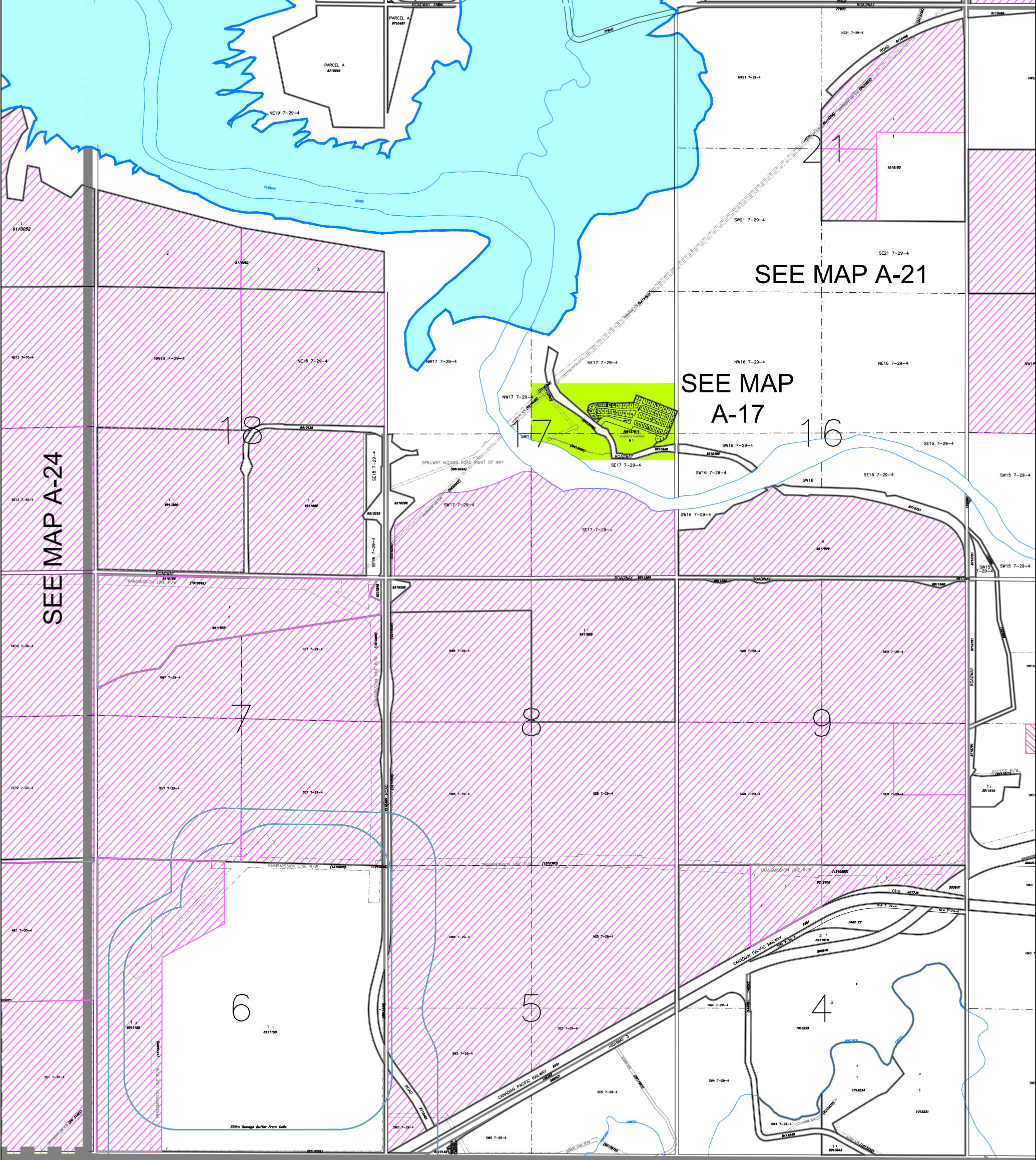


M.D OF PINCHER CREEK No. 9
 LAND USE DISTRICT MAP
 Bylaw No. 1349-23, April 9, 2024

PORTION OF W 1/2 SEC 14, TWP 9, RGE 2, W 5 M

- Agriculture 'A'
- Rural Recreation 1 'RR-1'

MAP A-23



SEE MAP A-9

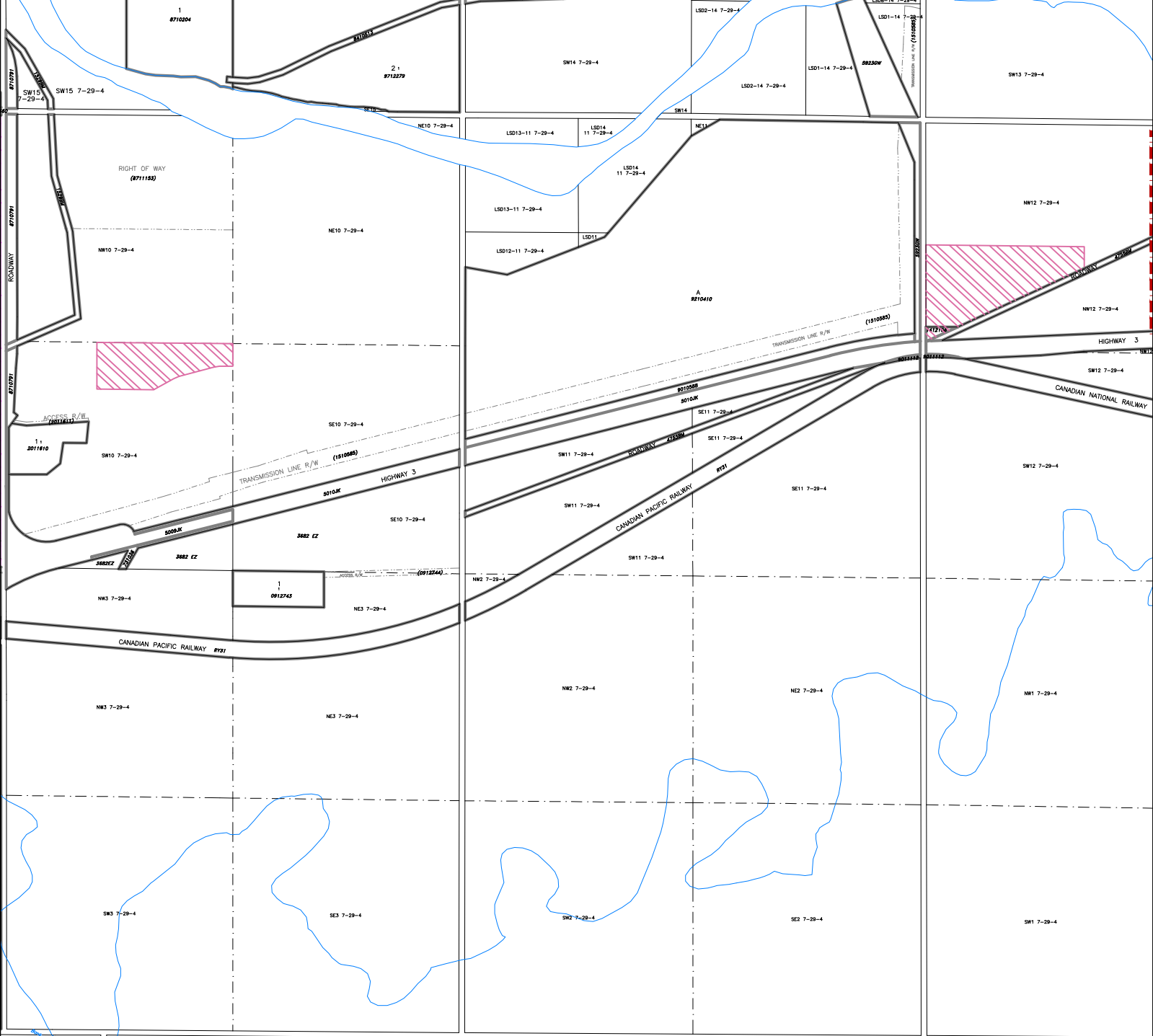


**M.D OF PINCHER CREEK No. 9
LAND USE DISTRICT MAP
Bylaw No. 1349-23, April 9, 2024**

N 1/2 SEC 4, W 1/2 SEC 6, SEC 7, SEC 8, SEC 9, S 1/2 SEC 16, S 1/2 SEC 17, SEC 18,
S 1/2 SEC 19, TWP 7, RGE 29, W4M

MAP A-25

- Agriculture
- Wind Farm Industrial
- Rural Recreation 2 'RR-2'
- 'A'
- 'WFI'

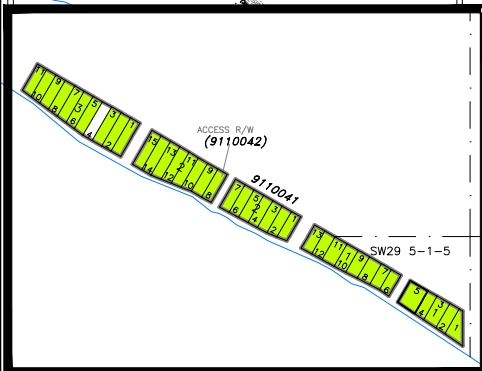
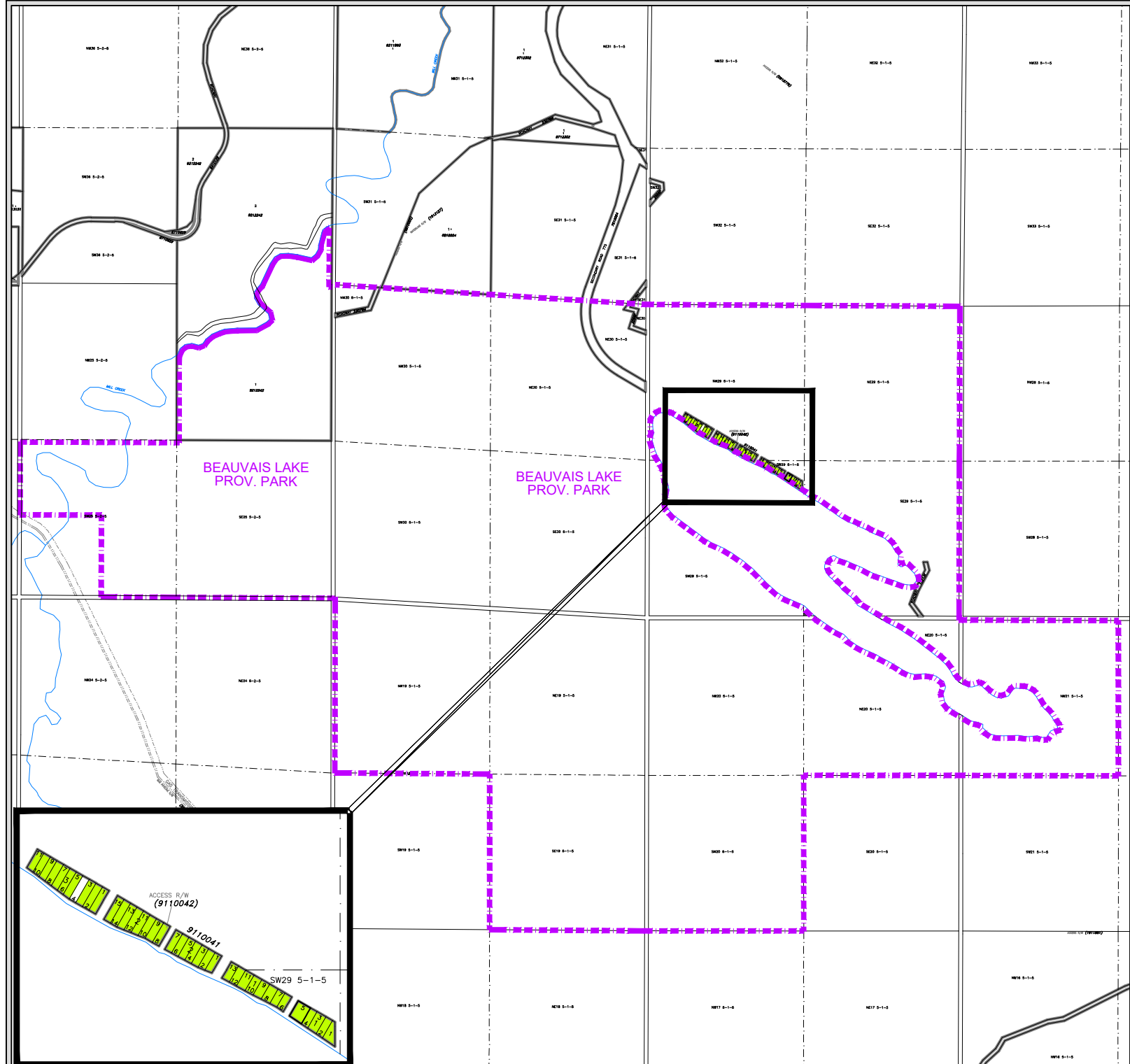


**M.D OF PINCHER CREEK No. 9
LAND USE DISTRICT MAP
Bylaw No. 1349-23, April 9, 2024**

PORTION OF SW 1/4 SEC 10 & NW 1/4 SEC 12 , TWP 7, RGE 29, W 4 M

MAP A-26

- Agriculture 'A'
- Multi-Lot Heavy Rural Industrial 'MHRI'



BEAUVAIS LAKE
PROV. PARK

BEAUVAIS LAKE
PROV. PARK



M.D OF PINCHER CREEK No. 9
LAND USE DISTRICT MAP
Bylaw No. 1349-23, April 9, 2024

BEAUVAIS LAKE

- Agriculture
 - Rural Recreation 2
 - Provincial Park Boundary
- 'A'
'RR-2'

MAP A-27

1529LK

B
2420JK

A
2420JK

PARCEL C
7962JK

1529LK

1529LK

1529LK

IRR1758

WATERTON RIVER RESERVOIR



M.D OF PINCHER CREEK No. 9
LAND USE DISTRICT MAP
Bylaw No. 1349-23, April 9, 2024

PORTION OF BLOCK 'OT'; PLAN 2420JK
WITHIN NE 27, TWP 4, RGE 28, W 4 M

MAP A-28

-  Agriculture 'A'
-  Rural Recreation 1 'RR-1'

SW16 3-29-4



M.D OF PINCHER CREEK No. 9
LAND USE DISTRICT MAP
Bylaw No. 1349-23, April 9, 2024

PORTION OF SW 16, TWP 3, RGE 29, W 4 M

MAP A-29

-  Agriculture 'A'
-  Rural Recreation 2 'RR-2'

1 1
1911330

1 2
1911330

CASTLE RIVER

NW21 6



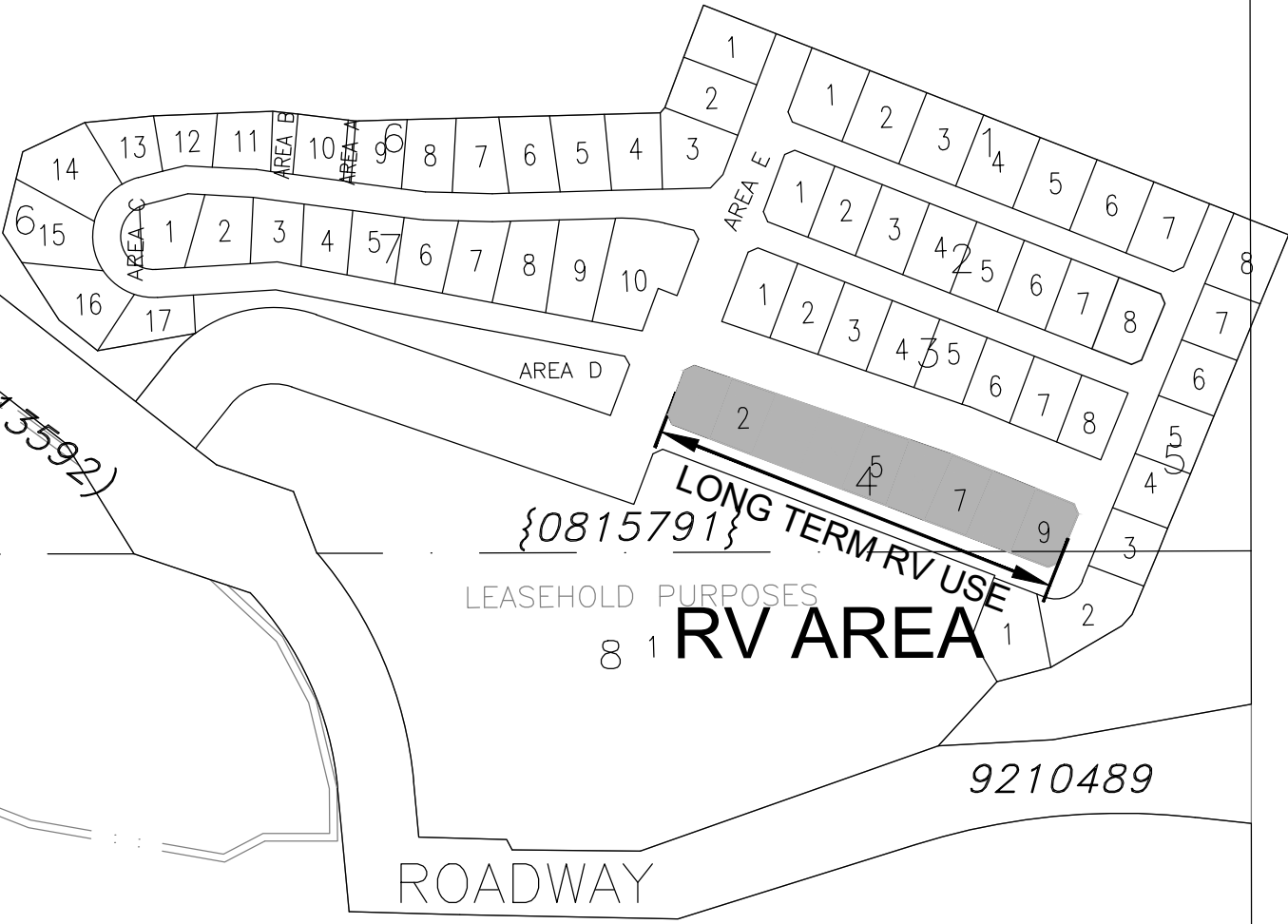
M.D OF PINCHER CREEK No. 9
LAND USE DISTRICT MAP
Bylaw No. 1349-23, April 9, 2024

PORTION OF LOT 1, BLOCK 1, PLAN 1911330
WITHIN NE 20, TWP 6, RGE 1, W 5 M

MAP A-30

-  Agriculture 'A'
-  Rural Recreation 2 'RR-2'

NE17 7-29-4



SF17 7-29-4

CASTLE VIEW RIDGE LOT PATTERNS

FIGURE 7

